

swisslog

Member of the KUKA Group

A hand is pointing upwards with the index finger towards a glowing red hexagonal shape. Inside this hexagon, the letters 'SAP' are written in a bold, white, sans-serif font. The background is a blurred image of a person in a blue shirt, overlaid with a white hexagonal grid pattern.

SAP

EVERYTHING FROM A SINGLE SOURCE

**INTRALOGISTICS TECHNOLOGIES
FROM SWISSLOG WITH SAP EWM**

SAP SOLUTIONS FROM SWISSLOG

Premium-level integration

SAP EWM FROM SWISSLOG

Forward-looking, automated warehouse and distribution centers need more than just high performance intralogistics technologies. They also require customized software that can intelligently and efficiently control the ever growing complexity of material flows and data. Many logistics experts rely on SAP EWM (Extended Warehouse Management), the warehouse management system from SAP. It offers the ability to manage and control complex warehouse processes and is becoming increasingly more important in logistics. Swisslog has been an SAP interface partner for decades and an SAP service partner since 2011. We have continuously expanded and proven our SAP expertise in many joint logistics projects. This makes us a sought-after partner when it comes to combining warehouse and picking systems with automated SAP control. As a general contractor, we provide everything from a single source: from complete planning and implementation to service. Join us on the way to Industry 4.0 where software plays a crucial role!



PROJECT EXAMPLES

Our customers in a wide range of industries trust Swisslog intralogistics technologies combined with SAP EWM. Here is a small selection:

PostLogistics, Switzerland



The logistics service provider of Swiss Post has invested in a new logistics center for online business and e-commerce. This includes the fully automated AutoStore compact warehouse system, with 32,000 bins and an interface to SAP EWM.

F. Hoffmann-La Roche, Switzerland



The global pharmaceutical group relies on AutoStore from Swisslog controlled by SAP EWM. The system offers secure and effective operation, meeting the strict requirements for pharmaceutical products.

Almarai, Saudi Arabia



Swisslog is in charge of several pallet-based finished goods warehouses and a fully automated picking and product distribution center for the manufacturer of dairy products. SAP software manages the entire supply chain.

WHAT ARE THE BENEFITS OF WORKING WITH SWISSLOG?

Added value along the entire supply chain

Swisslog not only has decades of experience in intralogistics, it also embodies strength of innovation. For our customers, we think outside the box and do our utmost to find the best solution for each individual requirement. This includes seamless and reliable integration of technology, hardware and software – also, and particularly, in SAP environments. Creating added value for our customers along the entire supply chain is our primary goal.

Future-proof intralogistics technology and software from a single source

Swisslog focuses on intralogistics technologies that already meet tomorrow's requirements today. In line with Industry 4.0, we develop and implement advanced warehouse automation solutions that include intelligent robotics and autonomous systems. Our software expertise ensures the seamless connection of our technologies to existing SAP systems. Our customers receive everything from a single source: conveniently, reliably, and safely.

First one-stop supplier of AutoStore and SAP EWM

Swisslog is the first system integrator to offer AutoStore, the automated compact warehouse system, with connectivity to SAP EWM from a single source. We can precisely align warehouse and picking processes and their control when facility planning begins. The material flow is optimized with great foresight and integrated into an SAP environment. Customers benefit from smooth commissioning followed by stable and reliable operation.

SAP SOLUTIONS FROM SWISSLOG

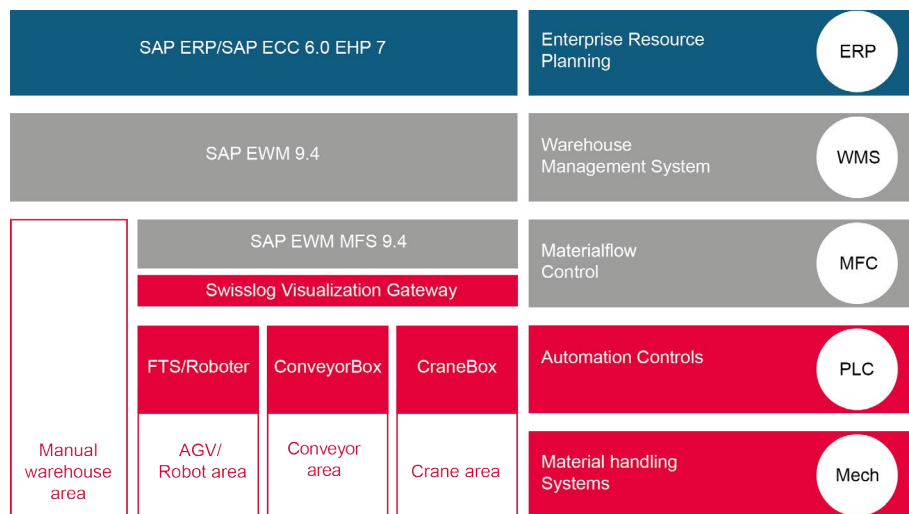
Software architecture and interfaces

SOFTWARE REQUIREMENTS

Intralogistics from Swisslog can be used in nearly any SAP environment. An up-to-date version of the SAP system is best (SAP ERP/ECC 6.0 EHP 7 ff.). SAP EWM is set up as a decentralized warehouse management system that can be operated on a classic SAP platform (NetWeaver) or an SAP HANA platform. For existing legacy SAP platforms, we recommend migrating to a later version in order to minimize the amount of integration work required.

SYSTEM HIERARCHY

Within the automation hierarchy featuring a higher-level SAP ERP and SAP EWM system, Swisslog systems dock on the control level (PLC, programmable logic controller) and on the field or process level (mech/mechanics, material handling). The Swisslog Interface Standard (SIS) makes this a completely smooth and secure process. SIS defines the vertical integration of Swisslog facilities, including visualization. SPOC (Single Point of Control), Swisslog's visualization software, defines how information is displayed, either in 2D or 3D.

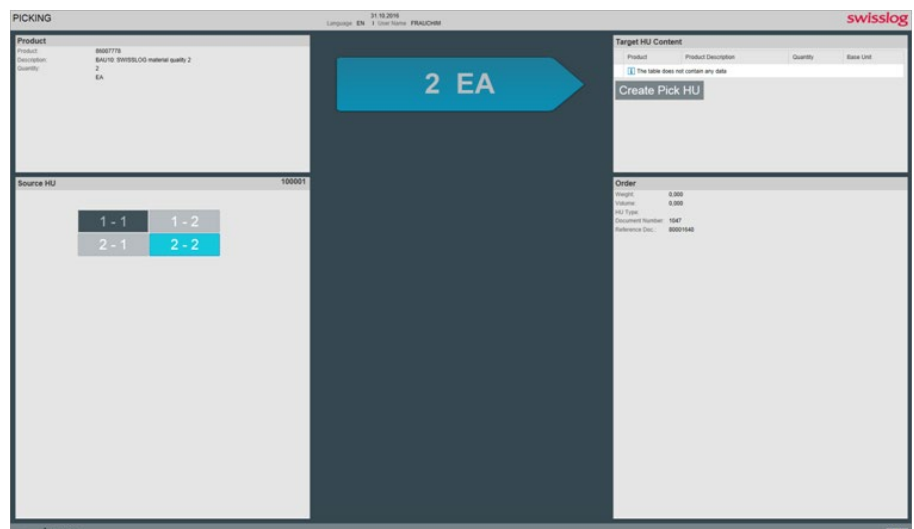


MFS PACKAGE FROM SWISSLOG

The MFS (Material Flow System) package from Swisslog makes sure that SAP and Swisslog solutions can communicate right from the start. This MFS package adds special request codes for Swisslog technologies to the functions of the regular SAP material flow system. The package integrates stacker cranes, shuttles, monorail systems, conveyors systems, automated guided vehicles (AGVs) and robots. In addition, the AutoStore compact warehouse system and the CarryPick mobile warehouse solution can be connected to SAP EWM as special functions.

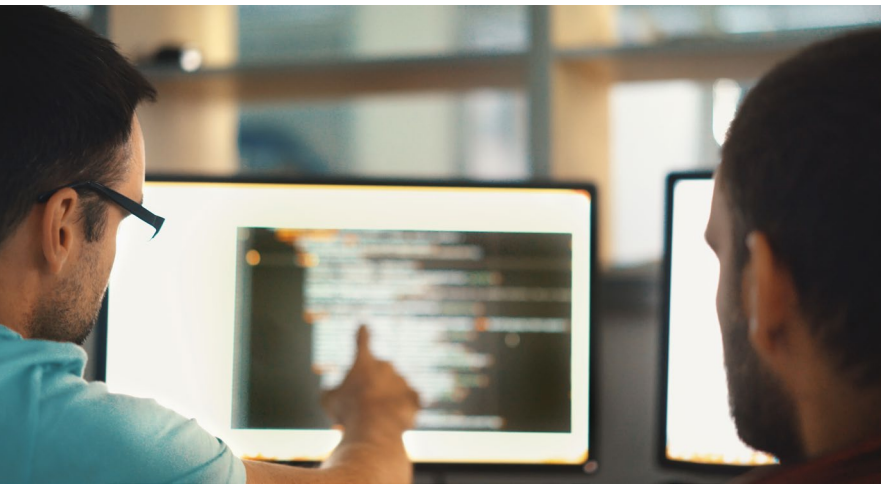
USER GUIDANCE

All SAP solutions from Swisslog focus not only on smooth material flow but also on easy and secure user guidance during operation. All screen displays and dialogs are clearly organized and easy to follow. With displays reduced to the basic necessities, any logistics employee should be able to begin using the system securely and productively within a very short period of time.



SAP SOLUTIONS FROM SWISSLOG

Service from A to Z



SERVICE PORTFOLIO

Swisslog offers its customers a comprehensive portfolio of services for integrating SAP solutions.

Our offerings include:

- Software project management
- Detailed project planning
- SAP system customization
- Additional software design (following gap analysis)
- Additional programming (following gap analysis)
- Software integration and testing
- Documentation and user training
- Test runs in a Q environment
- Transition management (switchover)
- Go live/startup
- On-site support during the startup phase
- Lifetime support according to service agreement

ABOUT SWISSLOG

In today's competitive world, companies must be able to deliver the right orders to the right customers at the right time. Errors and delays in order fulfillment can have lasting negative impacts on a brand while maintaining high stock levels ties up capital and reduces flexibility.

As a full-service provider of automated intralogistics systems, Swisslog delivers everything companies need to optimize logistics from planning through implementation. We are shaping the future of intralogistics through a new era of flexible, robotic and data-driven automated solutions that create exceptional customer value.

Our order fulfillment and inventory solutions enable companies to achieve the highest throughput at the lowest cost, efficiently handle large catalogs of SKUs, and accurately meet delivery demands and requirements.

DESIGN



Consult



Analyze



Plan Solution



Choose Solution

DEVELOP



Engineering



Integration



Installation



Ramp-up

DELIVER



Preventive Maintenance



24/7-Support



Optimization & Spare Parts



Modernization & Expansion

More information:
www.swisslog.com
www.swisslog.com/sap

swisslog

Member of the KUKA Group